

SC-FAST for Hg

Sample injection system for analysis of memory prone elements

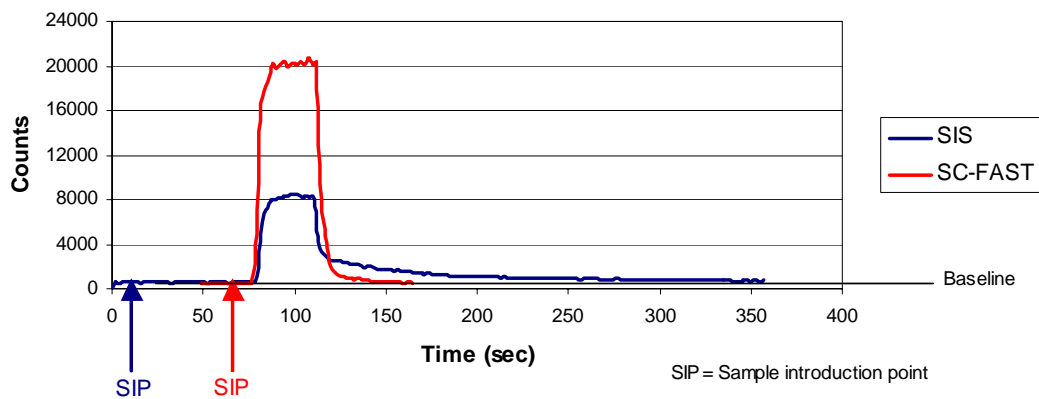
The SC-FAST system reduces the memory of volatile analytes such as Hg to such an extent that they can be added to ICPMS analytical methods.

- Minimizes sample uptake and wash-out time
- Reduces stabilization time
- Operates without alteration to analytical measurement time
- Add Hg to ICPMS methods
- Reduces salt loading of ICPMS cones
- Full integration between SC-autosampler and SC-FAST system
- Compatible with most ICP / ICP-MS systems



The FAST system integrated to the SC-2 autosampler includes control of an inert injection valve for sample injection or chromatography applications.

10ppb Hg Wash-in / Wash-out time profiles



- Enhanced sensitivity due to reduced memory
- Sample reaches steady state rapidly
- Wash-out to baseline in <30sec. SIS does not reach baseline after 250sec.

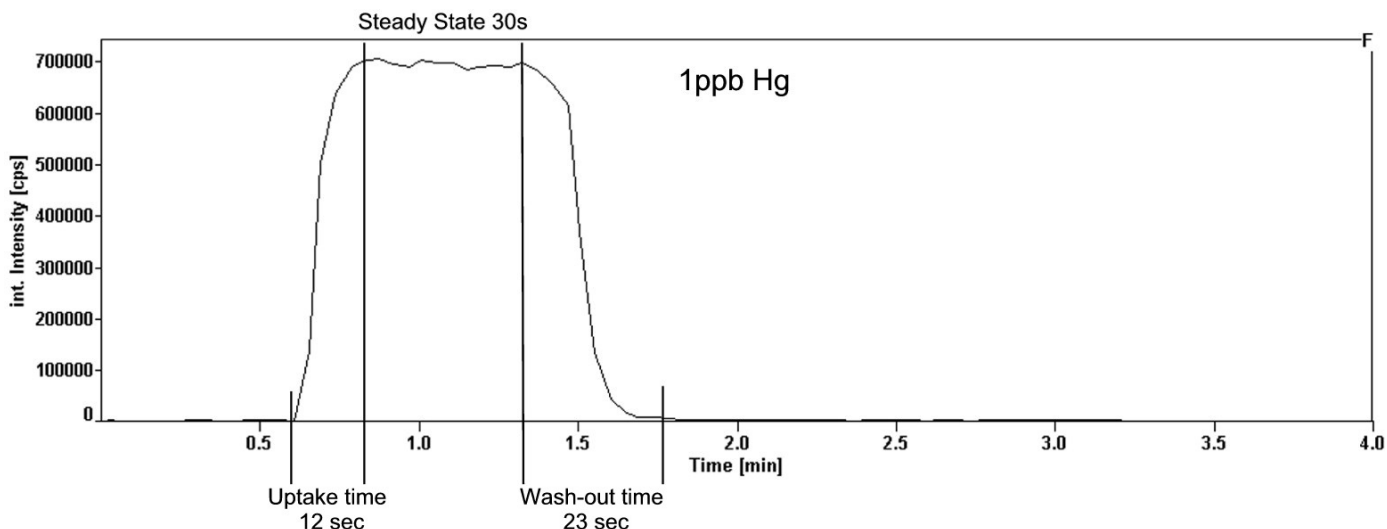
Elemental Scientific Inc.
2440 Cuming St.
Omaha, NE 68131 USA
www.elementalscientific.com

Phone: 402.991.7800
Fax: 402.991.7799
Email: esi@icpms.com

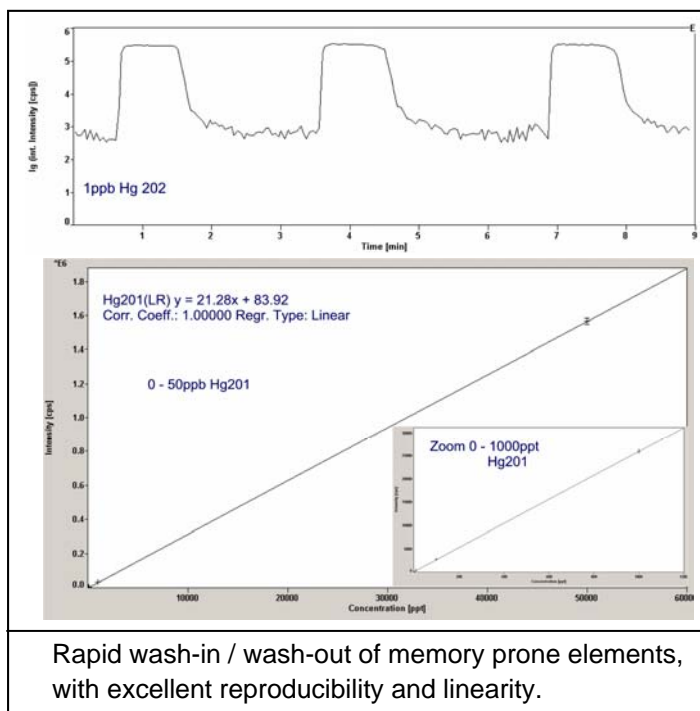


The SC-FAST integrates fully with the SC-autosampler to ensure the fastest sample turnaround possible.

The 6-way valve system virtually eliminates sample uptake and wash times with no other alteration to the analytical method. The benefit is the ability to include memory prone elements such as Hg into analytical methods.



- Up to 1,000 fold wash-out for Hg observed in less than 10s. Complete wash-out in less than 30s.
- Rapid uptake time reaching steady state signal within 12s.
- Excellent linearity in calibrations
- Excellent reproducibility
- No loss in performance of the ICP system is observed.
- Low contamination through use of SC-series autosampler and removal sample contact with peristaltic pump tubing.



Rapid wash-in / wash-out of memory prone elements, with excellent reproducibility and linearity.

Elemental Scientific Inc.
2440 Cuming St.
Omaha, NE 68131 USA

Phone: 402.991.7800
Fax: 402.991.7799
Email: esi@icpms.com