

SC-FAST for Hg

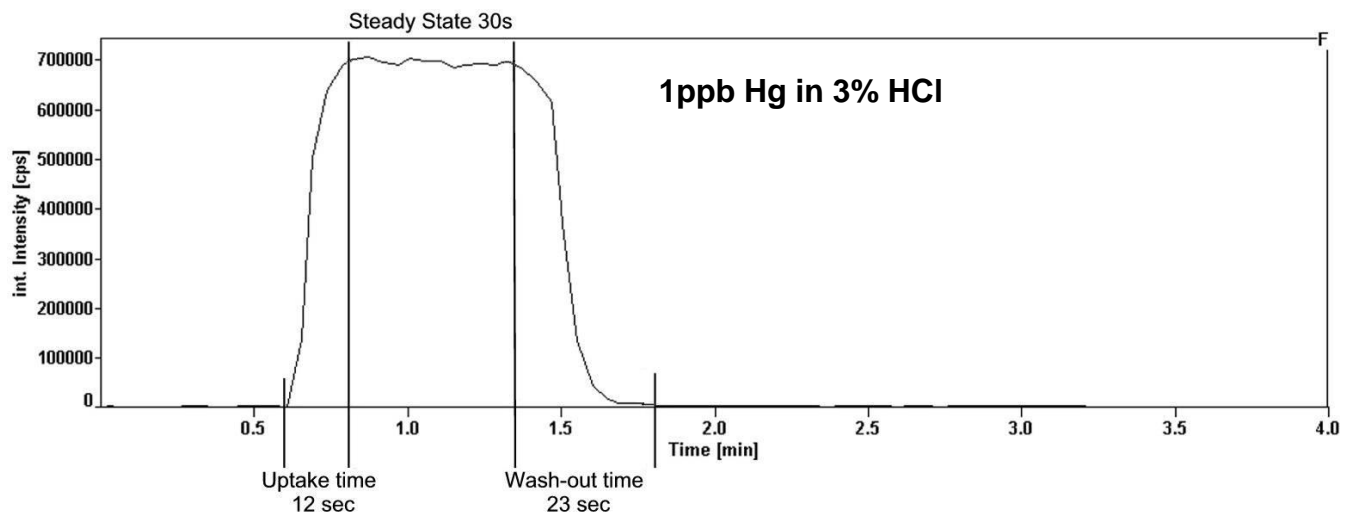
Sample injection system for analysis of memory prone elements

The SC-FAST system reduces the memory of volatile analytes such as Hg to such an extent that they can be added to ICPMS analytical methods.

- Minimizes sample uptake and wash-out time
- Reduces stabilization time
- Operates without alteration to analytical measurement time
- Add Hg to ICPMS methods
- Reduces salt loading of ICPMS cones
- Full integration between SC-autosampler and SC-FAST system
- Compatible with most ICP / ICP-MS systems
- Enhanced sensitivity due to reduced memory



The FAST system integrated to the SC-2 autosampler includes control of an inert injection valve for sample injection or chromatography applications.



Sample reaches steady state rapidly. Wash-out to baseline in <30sec.

Elemental Scientific Inc.
2440 Cuming St.
Omaha, NE 68131 USA
www.elementalscientific.com

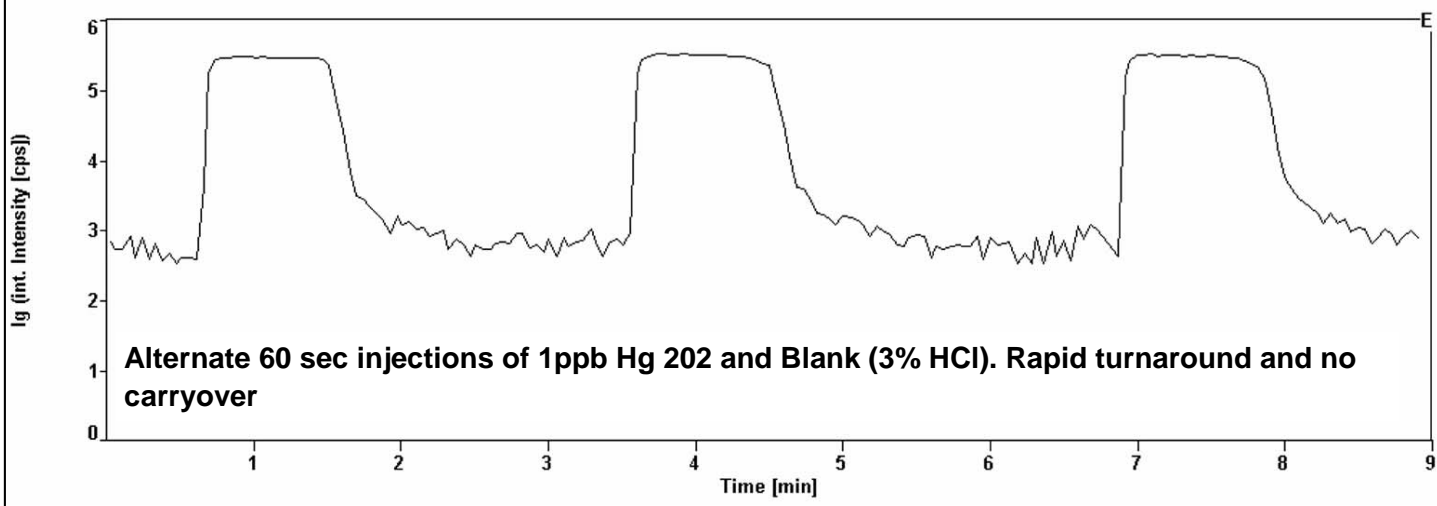
Phone: 402.991.7800
Fax: 402.991.7799
Email: esi@icpms.com



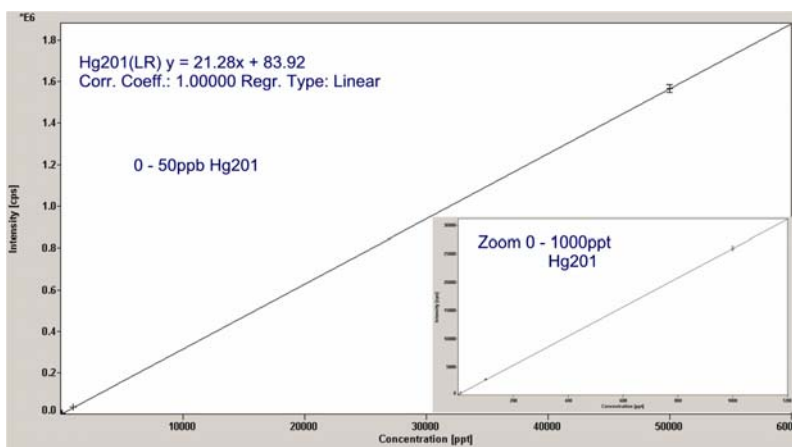
The SC-FAST integrates fully with the SC-autosampler to ensure the fastest sample turnaround possible.

The 6-way valve system virtually eliminates sample uptake and wash times with no other alteration to the analytical method. The benefit is the ability to include memory prone elements such as Hg into analytical methods.

Replicate Injections (logarithmic scale)



- Up to 1,000 fold wash-out for Hg observed in less than 10s. Complete wash-out in less than 30s.
- Low contamination through use of SC-series autosampler and removal sample contact with peristaltic pump tubing.
- Excellent linearity in calibrations
- Excellent reproducibility
- No loss in performance of the ICP system is observed.



Rapid wash-in / wash-out of memory prone elements, with excellent reproducibility and linearity.

Elemental Scientific Inc.
2440 Cuming St.
Omaha, NE 68131 USA

Phone: 402.991.7800
Fax: 402.991.7799
Email: esi@icpms.com